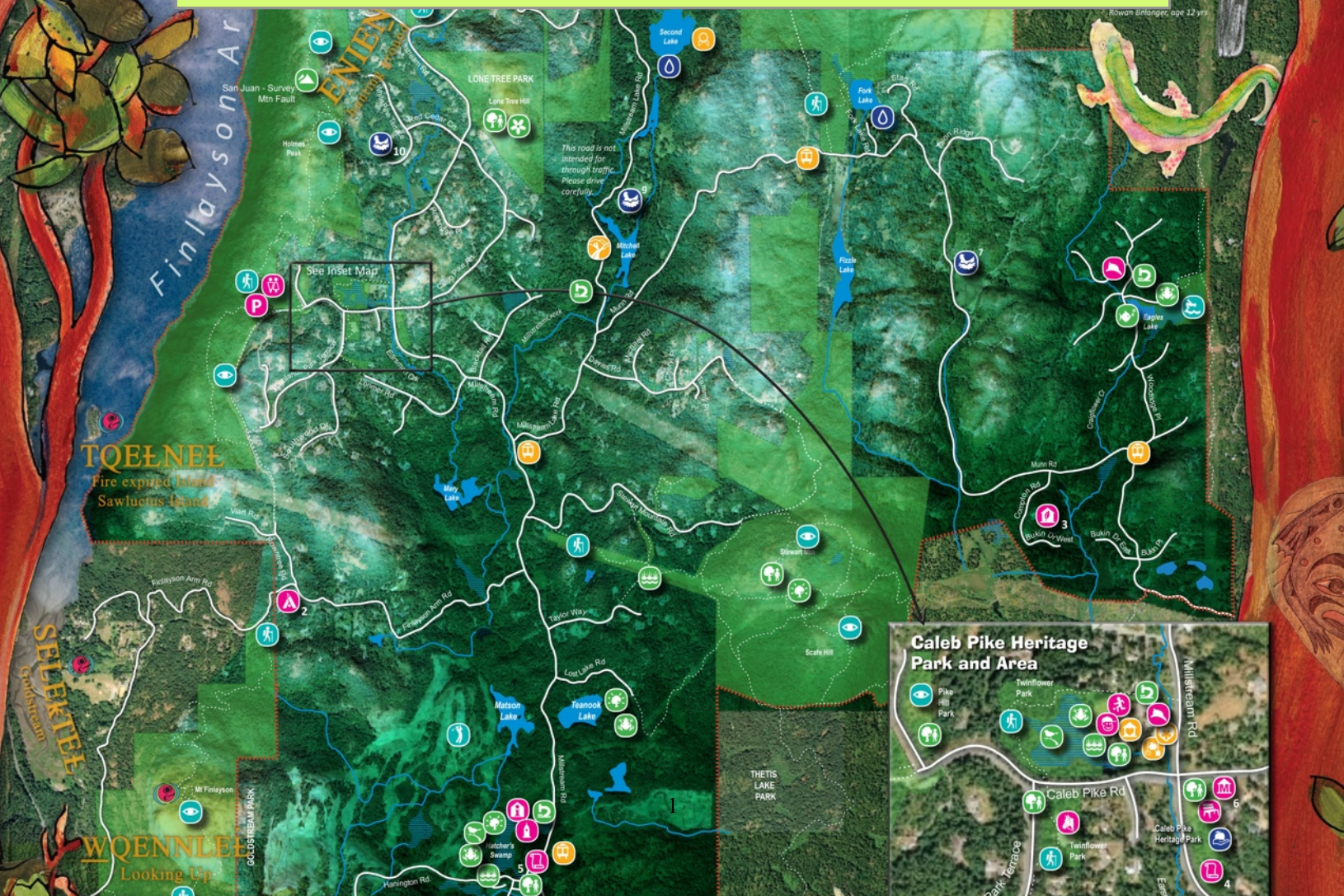


# Highlands Community Green Map

*The Highlands Green Map Project:  
Successful Innovative partnership in community  
building and celebration of place*





## The Project

The Highlands Green Map is the culmination of 2 years of community engagement between a group of volunteer mappers and the larger Highlands community. The process involved children and elders, First Nations, descendants of pioneers, and new residents; artists, ecologists and historians. In the creation of this map, dozens of residents and visitors were consulted during the summers of 2007 and 2008. The goal was “to discuss and then share through a map some of the best places in our backyard, and to explore visions of the future for a sustainable Highlands.” The process was facilitated through partnerships with the Community Based Research and Geography departments at the *University of Victoria*, the *Common Ground Community Mapping Project* and the *Westshore Arts Council*.<sup>1</sup>

The District of Highlands plays an important role in the Capital Regional District’s regional sustainability strategy with the parks and green space it provides to residents and tourists in the region. It is important to share this space in ways that honour its natural beauty and show respect to both its residents, and the peoples who have traditionally used this land. Maps are incredibly powerful. They can educate and engage through stories, art and pictures. Dozens of suggestions for sites to place on the map came forward in the process and many eventually found a place in the final version. The project focused on sites that were deemed to be of special interest to visitors and residents, while encouraging the sustainable use of forests, wetlands, meadows and waters. The Highlands Green Map Project is now part of an important regional sustainability vision.

## Celebration of Place and Tourism

The synergy created from the natural beauty, art and culture held in the map is inviting and infectious. It has encouraged people to talk about, and then visit the Highlands. Whether it is residents from the Capital region unfamiliar with the Highlands, or visitors from around the world, the Highlands Green Map has captured people’s imaginations.

### ***Around the World***

The Highlands Green Map story is getting around. As part of the Worldwide Green Map system promoting sustainable community development, the Highlands Green map and the process which created it is shared around the world. One of the features of the Green Map system is a common iconography. The Highlands map uses icons that are recognized internationally to mark places of interest for tourists like parks, heritage sites and services. They also identify important natural features such as



---

<sup>1</sup> See <http://mapping.uvic.ca/highlands-greenmap>, <http://mapping.uvic.ca/node/768>, [http://highlands.bc.ca/maps/community\\_green\\_map/](http://highlands.bc.ca/maps/community_green_map/); <http://www.greenmap.org/greenhouse/en/node/4949#>

wetlands, view points and protected areas. The Highlands project also created new icons to reflect its special character. They included icons for the District fire halls, an equestrian field and a heritage road. A very special icon, which connects the Highlands to its common heritage with First Nations was created by local *WSÁNEĆ* artist John Elliott (*S,TOLÇEL*). It was used to mark places with special First Nations significance.

*“The icon is a salmon egg. The circle reminds of the natural laws of the land. The egg is the life in water and on land. The crescents on either side represent moons past and moons to come.” - S,TOLÇEL*



### ***In the Region***

Thanks to a grant from the *Union of BC Municipalities*, 4000 copies of the map were printed.<sup>2</sup> A copy was mailed to every Highlands resident, and remaining copies have been made available for tourist promotion. A major story was written and published in *Westshore* magazine.<sup>3</sup> An event to celebrate the map completion was held at the Caleb Pike Heritage Park in June 2009, and advertised throughout the region. The beauty of the Highlands Green Map is something which attracts other communities. It has inspired community mapping projects in Langford, Oak Bay and Metchosin. It continues to be shared as a successful example of the community based mapping approach in workshops through out the region and Vancouver Island, by the mapping partners from the *University of Victoria* and *Common Ground*. Quite simply, everyone involved is proud of the Highlands Green Map.

### **Green Map Project Components**

- Contemporary and First Nations Art
- First Nations and Pioneer Culture and Heritage
- First Nations and Pioneer Place Names
- Climate and Water Conservation
- Parks, Nature and Ecology
- Green Tourist Businesses

**Green & Tourist Businesses**

**Alternative Health**  
Earth Spring Sanctuary (Evelyn Samuel and Michael Bocking)

**Artists**  
Terri Rodstrom (909 Finlayson Arm Road) (250) 391-0193  
Brenda Alexander-Roessingh (brenda@roessong.com)  
Muriel Sibley / Winter Creek Pottery (178 Ross Durrance Road)  
Wren's Silverwork (178 Ross Durrance Road)  
Marcela Stradas (250) 519-4729 www.marcelastradas.com

**Musicians & Composers**  
Allen Dobb (250) 391-3998  
Karel Roessingh (www.roessong.com)

**B&B**  
Misty Meadows (2627 Bukin Drive East)  
(250) 727-6405

**Natural Building**  
Eco-Sense Cobb House (Ann and Gordon Baird, 3295 Compton Road), www.eco-sense.ca

**Eco Practices**  
Dogwood Boarding Kennels (1830 Millstream Road)  
(250) 478-0073

**Farms**  
Goodland farm (4460 Munn Road)  
High & Dry farm (Ross Durrance Road)  
Kindwood farm (499 Millstream Lake Road)  
Silvanus farm (1485 White Pine Terrace)  
(250) 391-9612

**Flowers**  
Bramble Cottage (652 Millstream Lake Road)  
(250) 474-9905

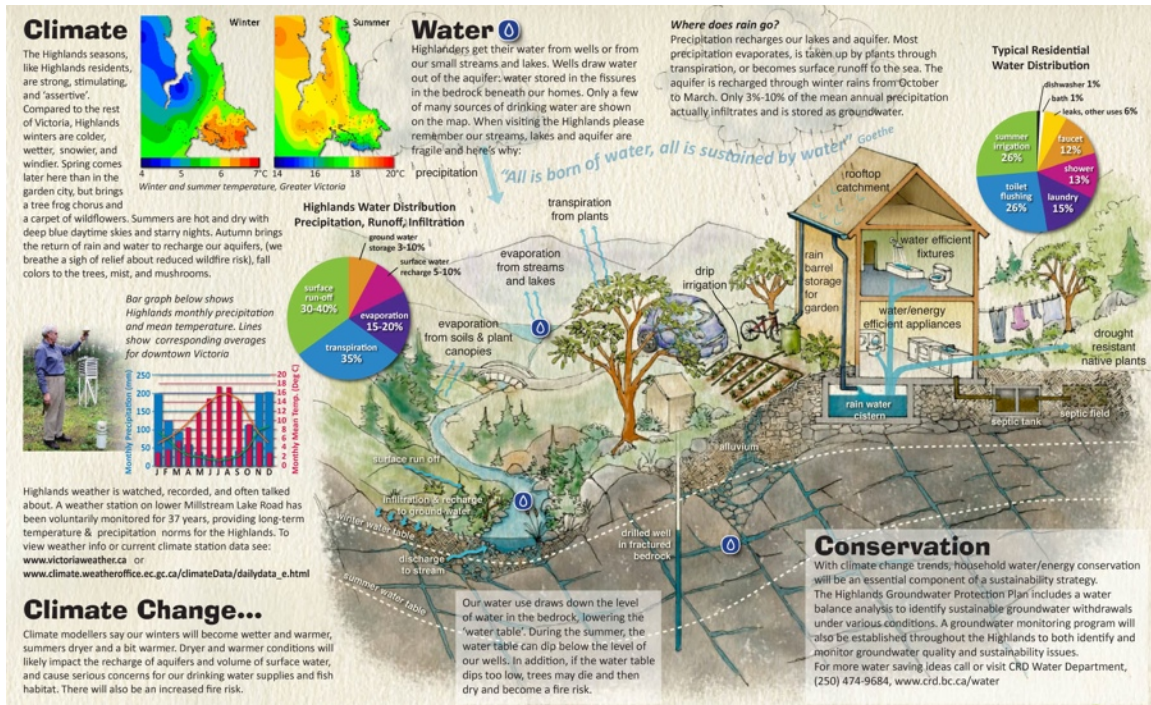
**Recreation**  
Bear Mountain Golf (250) 391-7160

Photo: Eco-Sense junior builders with hot water heating tube and solar panels

<sup>2</sup> The Highlands Green Map is 24 x 34 inches, printed with vegetable based inks, on Forest Stewardship Council certified recycled paper.

<sup>3</sup> Westshore Magazine Published by the Westshore Chamber of Commerce. 2009. Vol. 2. No. 1. Available at: [http://www.westshore.bc.ca/magazine/WestShore\\_Magazine\\_Vol\\_2\\_Issue\\_1.pdf](http://www.westshore.bc.ca/magazine/WestShore_Magazine_Vol_2_Issue_1.pdf); page 47





*Climate and Water Conservation, and nature panels from the Highlands Community Map.*



## Lasting Impacts

The relationships created through this partnership continue on to develop other community maps. The Highlands Green Map is a living document, and it is also a reminder of a community vision that guides the future. A 4 x 6 foot version of the map is a center piece in the District's council chambers located in the "Old Highlands School House" at the Caleb Pike Heritage Park.

